



**TRAVEL
INFORMATION
HIGHWAY**

UTMC Conference 2008

Workshop 1 Urban – Interurban Integration

4th December 2008

The TIH Community

The Objective of TIH is.....

“Supporting the travel information marketplace...from spotting an opportunity to making an information exchange”

Our key outputs are the **TIH Principles** that provide

- Advice on Compliance
- Usage Agreement
- Expert Guidance

TIH is *not* a system

- It is the agreed framework for joining systems together via the Internet
- It simply sets out rules for data exchange

The TIH Community

- Currently 417 members (to July 2008)
- Diverse membership across public and private sector
- Most recent new members:

Appius

MNB

FMG SUPPORT

Encoded

Fonant

Dornier Consulting GmbH

A One

Simulation Systems Limited

GCap Media

Natural Integration Ltd

Immedia

Cambridgeshire County Council

Atos Origin

Knowsley Metropolitan Borough Council

Autostrade Italia

Rockshore

Building Capital Limited

Hampshire County Council

verkehrsinfo.de

GEWI GmbH

IBI Group

Codeworx Limited

Mouchel

Sapphire/travelNexus

GMG Radio

TIH Approach

To build universal system to system links to exchange traffic & travel information that:

Enables system to system links to be constructed effectively

Enables the DLOA process to be more effective and supports potential eDLOA development

Enables LTA's to comply with Traffic Management Act 2004

- Information exchange with operational partners
- Diversion routes
- Demand Management
- Access Control
- Incident management
- Event management
- Emergency planning

TIH Approach continued....

Saves you time & money by using the hard won experience of others

Offers business and software toolkits to speed up development

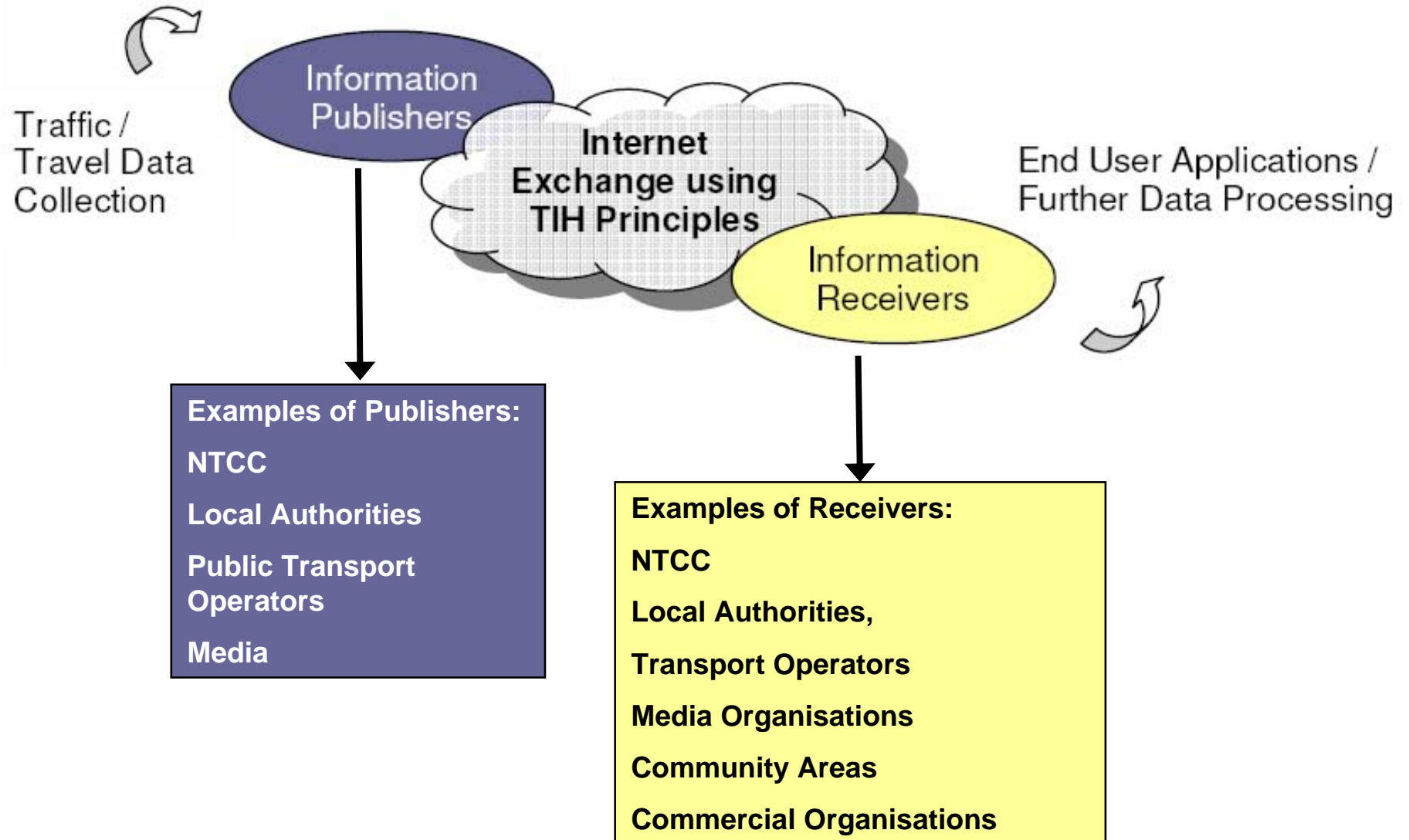
Embraces existing common practices by bringing practitioners together

Supports the Highways Agency National Guidance Framework

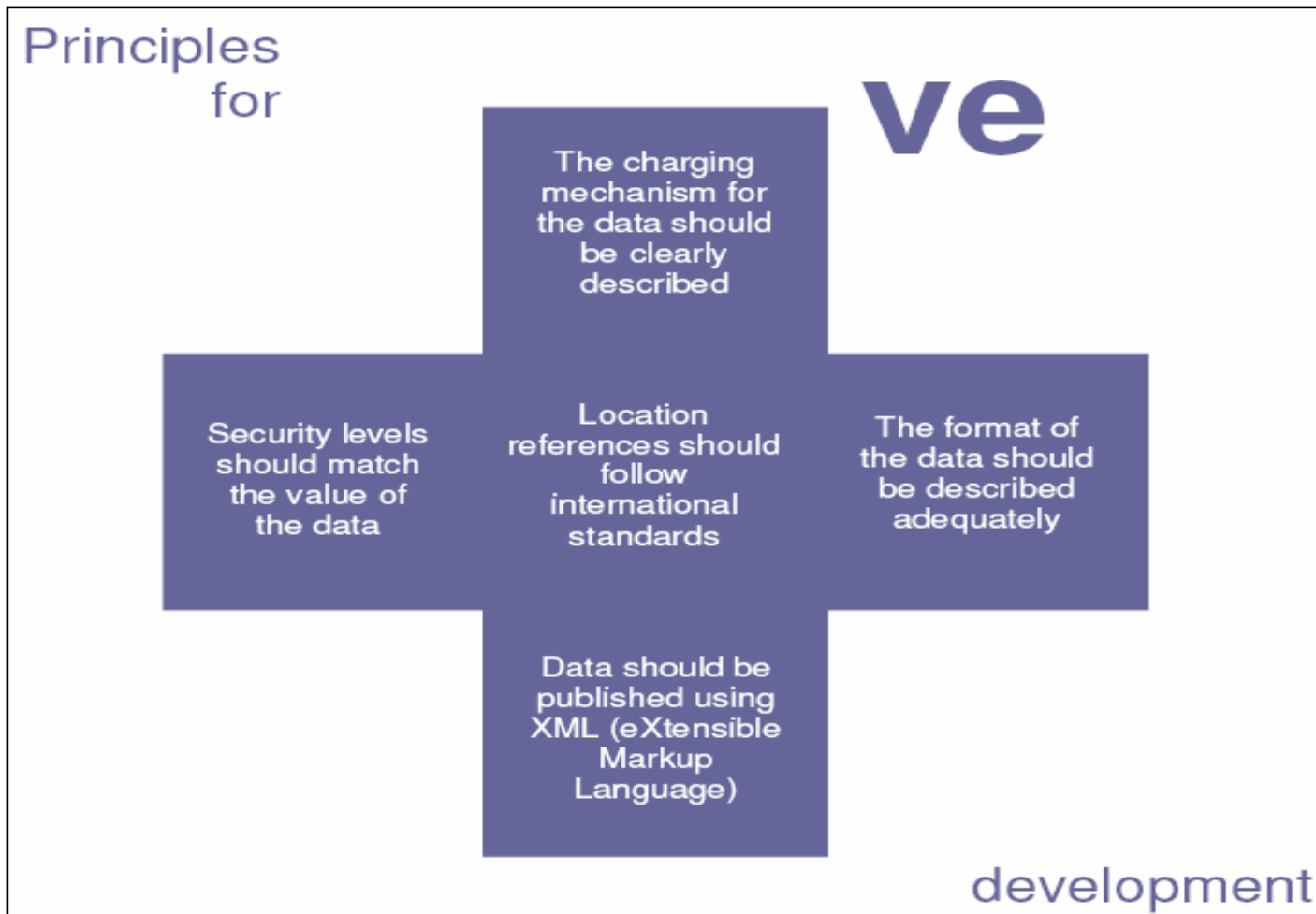
Supports the delivery of Local Transport Plan objectives

Supports the **mobility of people and goods**

Information Exchange



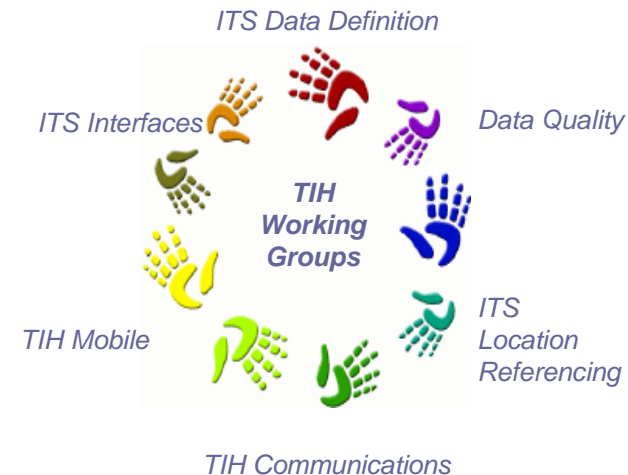
TIH Principles



TIH Support

Practical help and support available:

- **TIH website:**
www.tih.org.uk
- **Technical Support**
- **TIH Toolkit**
- **Helpdesk**
- **Working groups**
- **Expert advice**



TIH Working Groups

Data Registry

ITS Interfaces

Data Model

ITS Location Referencing

Our focus over the next 2 years is on the practical use and implementation of TIH Principles, to promote good practice and greater integration between the urban, interurban and strategic road networks

TIH Work Programme 08/10

Raise internal profile of TIH within HA & Support HA Technology Convergence Programme

Engage with TIH Community

NTCC Exploitation of TIH Principles

Promotion of TIH & DATEX II

Establish DATEX II Forum

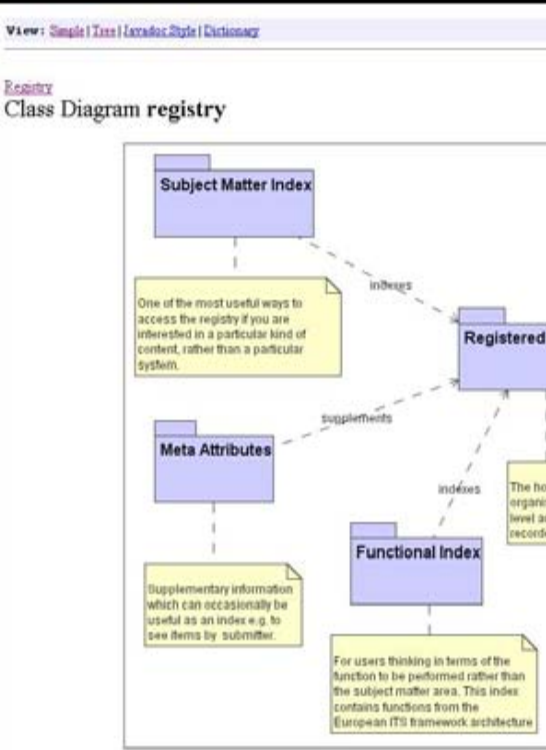
TIH Principles Accessibility

Manage & Coordinate WG Activities

Review / Update TIH Documents & Website & Promotion of Project

TIH Support

ITS Registry:
www.itsregistry.org.uk



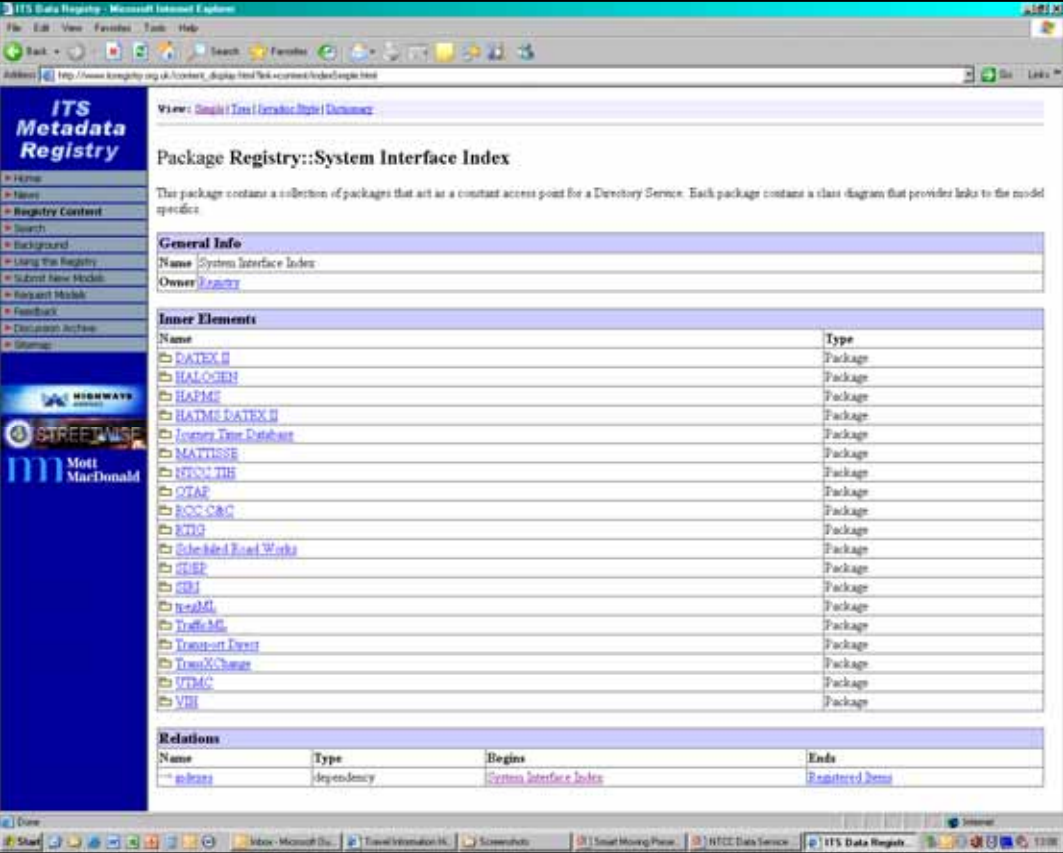
Class Diagram registry

Subject Matter Index
 One of the most useful ways to access the registry if you are interested in a particular kind of content, rather than a particular system.

Meta Attributes
 Supplementary information which can occasionally be useful as an index e.g. to see items by submitter.

Functional Index
 For users thinking in terms of the function to be performed rather than the subject matter area. This index contains functions from the European ITS framework architecture.

Registered
 The hierarchical level as records.



ITS Metadata Registry

Package Registry::System Interface Index

This package contains a collection of packages that act as a constant access point for a Directory Service. Each package contains a class diagram that provides links to the model specifics.

General Info

Name	System Interface Index
Owner	Industry

Inner Elements

Name	Type
DATEX II	Package
HALOGEN	Package
HAFME	Package
HAFME DATEX II	Package
Journey Time Database	Package
MATTISSE	Package
NRS/ITIS	Package
OTAP	Package
RCC/CAC	Package
RDG	Package
Scheduled Road Works	Package
SIRP	Package
GRI	Package
RoadML	Package
TrafficML	Package
Transport Event	Package
TravelChange	Package
UTM/C	Package
VRI	Package

Relations

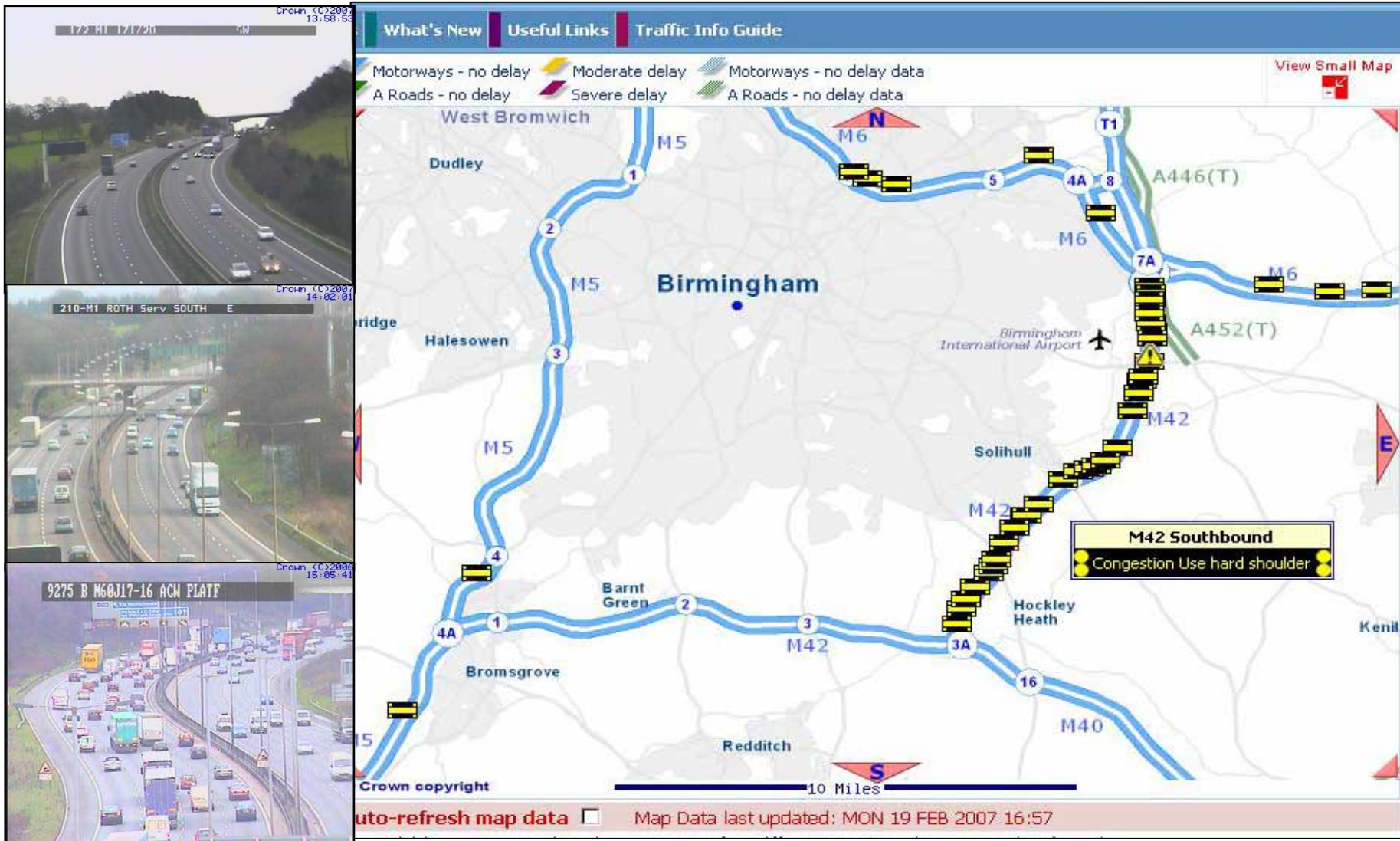
Name	Type	Begins	Ends
inIndex	Dependency	System Interface Index	Registered Items

General Info

Name	registry
Type	Class Diagram

TIH in Action





CCTV Auto-cycle for planned/unplanned events

Map interface showing traffic events (frequently updated)

Highways Agency

Traffic England

MATTISSE

Public Website – Help2Travel

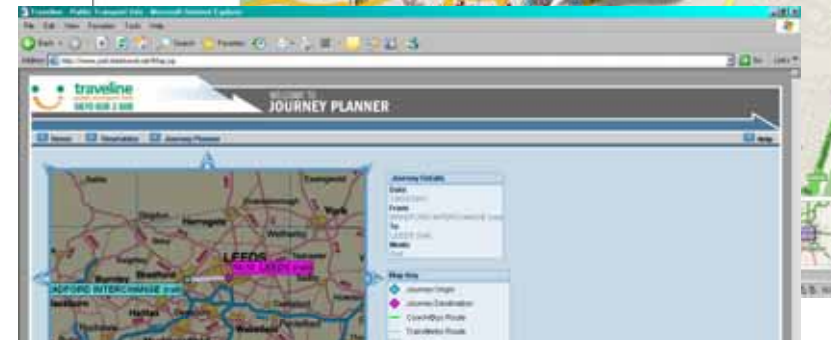
Public display screens



Leicester Information Website

Leeds Council Traffic Information

Reading Council Traffic Information



Other Operational Applications: Multi-site company; BMW Oxford

Just-in-time delivery between sites (Swindon to Oxford)

Time critical logistics

Demand for reliable, real-time traffic information for a specific geographical area

Potential roll out to employees

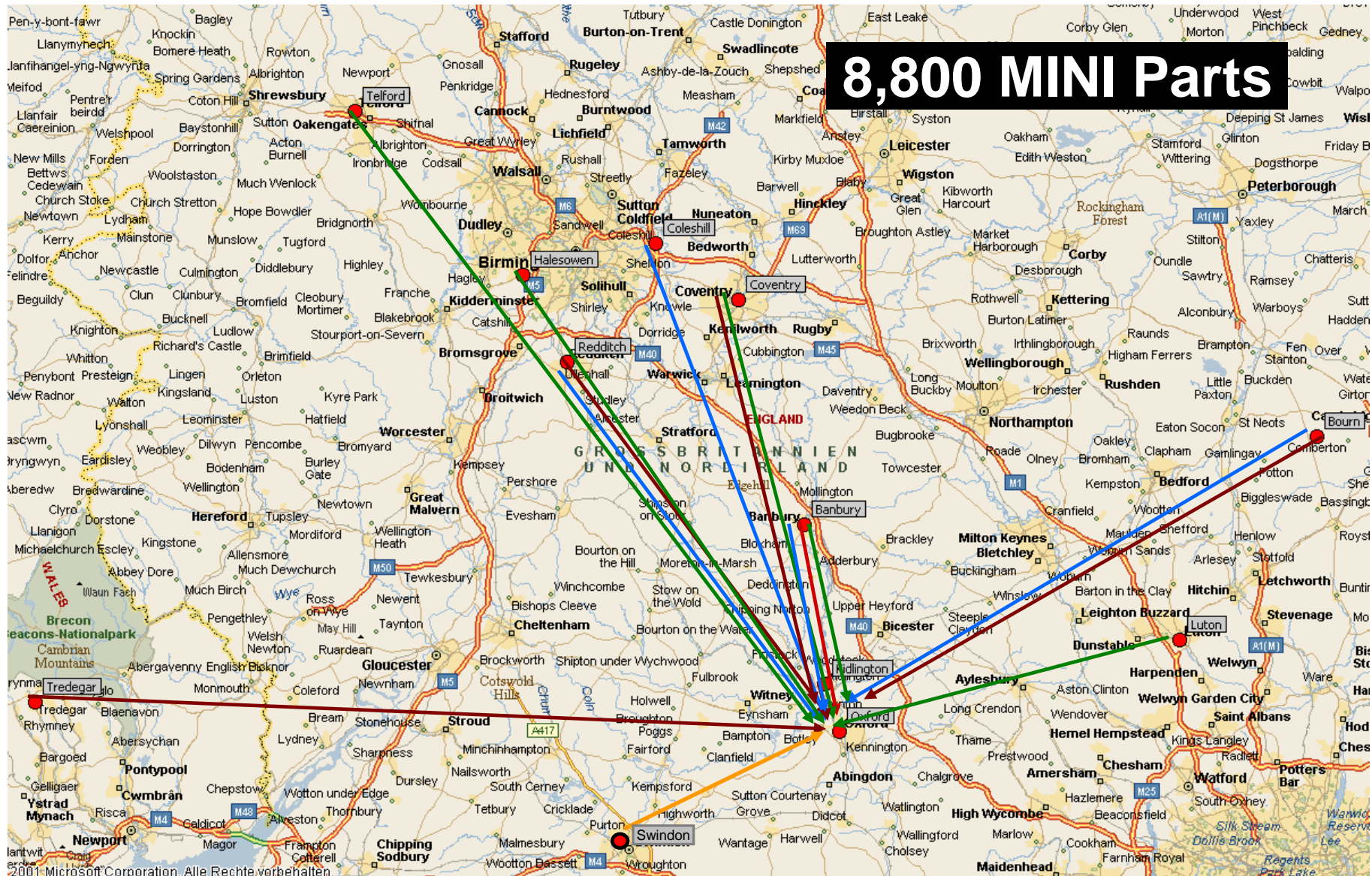
Key Benefits:

Able to plan optimal routes around incidents and planned events

Savings in time, costs and overall journey time reliability



JUST IN TIME DELIVERIES TO BMW MINI PLANT OXFORD.



Community Website

Diverse audience, catering for different travel information requirements

Journey planner, postcode based

Multi-modal travel eg. car, train, bus, walk, cycle.

Community focussed, small town or suburb

Could include other information e.g. weather forecasts, CCTV live images, local events



The screenshot shows the website for St Teresa's Community Centre. At the top, there is a navigation bar with links for 'home', 'contact us', 'search', and 'help'. Below this is a secondary navigation bar with 'Activities', 'What's On', 'News', 'Travel', and 'Local Life'. The main content area is divided into several sections:

- St Teresa's Community Centre:** A friendly centre serving your community with events representing the diverse neighbourhood of Perry Barr, offering interesting activities and support for the young and old alike. The centre is also available for hire with rooms and facilities suitable for groups/celebrations from 10 to 500 people.
- Next Bus info:** Text SMS code to 84268. It lists bus stops and their corresponding routes and times.

Bus Stop	Route	Time
Perry Barr, One Stop	33 Phaeasy	2 mins
SMS BUS Code: NWMAMTJD		33 Phaeasy 12:26
Perry Barr, One Stop	33 City Centre	Now
SMS BUS Code: NWMAMTMD		28A Perry Barr 12:21
PERRYBARR/ErwnCusho	11A Acocks Green	2 mins
SMS BUS Code: NWMQDJA		11E Perry Barr 12:25
Grosvenor Road	11A Acocks Green	3 mins
SMS BUS Code: NWMQDJD		11A Acocks Green 12:32
- Local weather:** Birmingham, 11°C.
- Calendar:** Feb 2007. A calendar grid showing dates from 1 to 28.
- What's on this week:** Balroom dancing for beginners, Bingo.
- Walk in advice:** on issues concerning adaptations, benefits and general queries.
- Gentle exercises whilst meeting new friends and attend outings throughout the year.**

At the bottom, there is a footer with links for 'Site map', 'Accessibility', 'Terms & Conditions', 'Your Pledge', 'Privacy Policy', 'Site by Maple', and 'Log in'.

Key Benefit: local travellers benefit from journey planning facility linked to localised events

TIH Developments



DATEX II Forum

Draft Terms of reference circulated to TIH Community for comment/feedback

TIH Executive Group reformed

First meeting held in October

Working Group activities under review

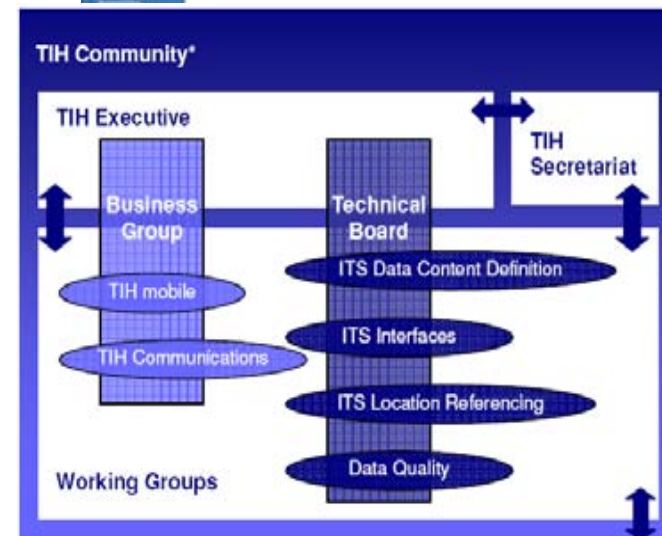
Focus on practical development and support

TIH Documents under review:

Principles & Technical documentation

Liaison with National Traffic Managers Forum

Cooperative working with Joint Chairs Group



Future Integration Opportunities

Technology Strategy Board

Informed Personal Travel: November 2008 Competition for Funding

- £8 million for an intervention aimed at providing reliable, accurate, and credible information for people to manage their journeys.

The challenge of informed personal travel is to:

- demonstrate alternative methods of planning travel that can also inform the traveller en route of any changes to the planned journey;
- create reliable, credible and live information that people will understand, trust and want to continue to use; and
- accelerate marketable solutions that are affordable and easy to use.

Competition open now, full application deadline: 5th March 2009.

FREEFLOW

- FITS project now underway that will improve the use of transport network data
- Development of UTMC/SIRI functional services utilising DATEX II and TPEG2

Conclusions

- Wide range of available traffic/travel information
- Proven technology, many examples of live services
- Expertise to help you design/develop your service
- Technical support & backup
- Customisable to your needs
- For further information contact:
 - NTCC Customer Relations
 - For further information on TIH visit: www.tih.org.uk

