

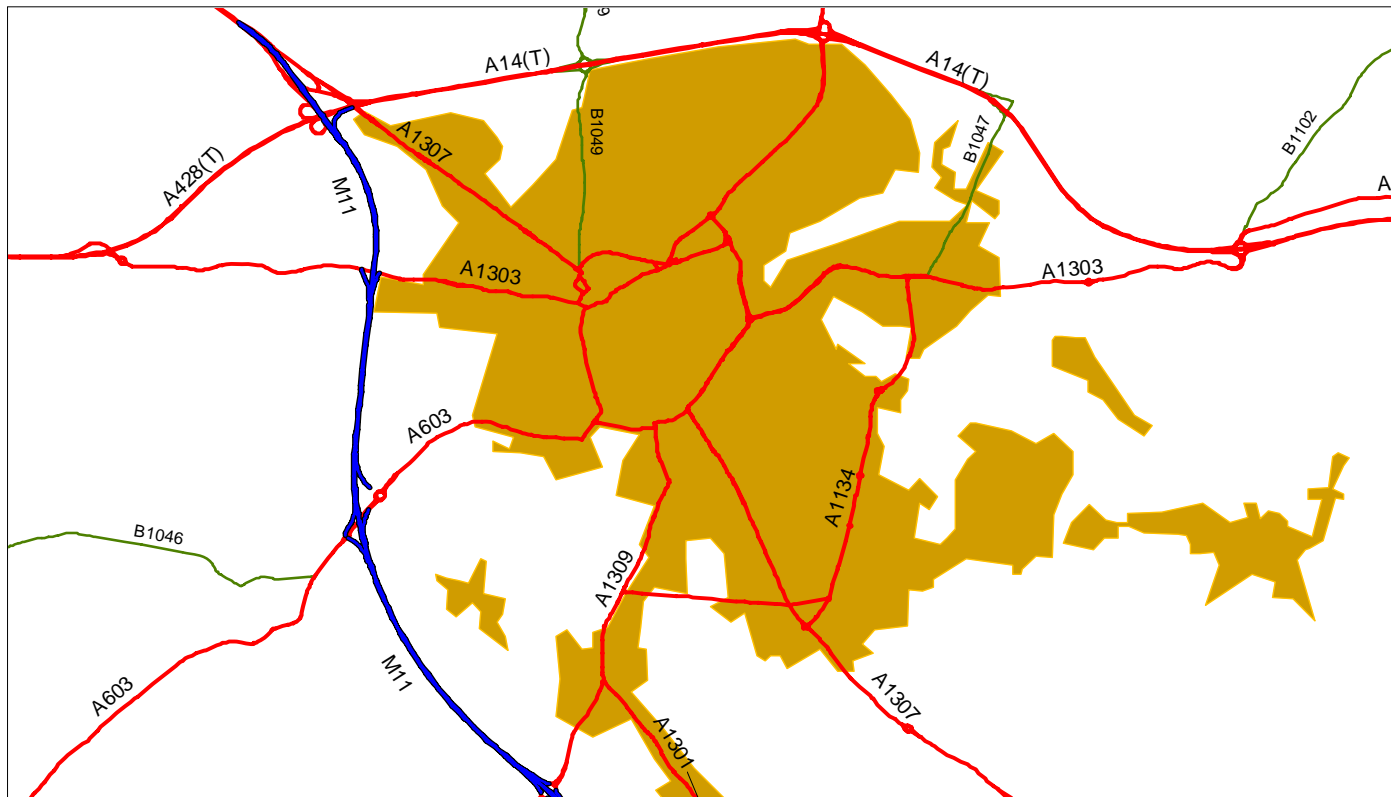


# The Potential Impact of Road User Charging on Network Management

Bob Tuckwell, Strategic Transport Adviser, &  
Russell de Ville, Traffic Manager and Head of  
Road Safety Services,  
Cambridgeshire County Council



# Cambridge City - Built-up Area

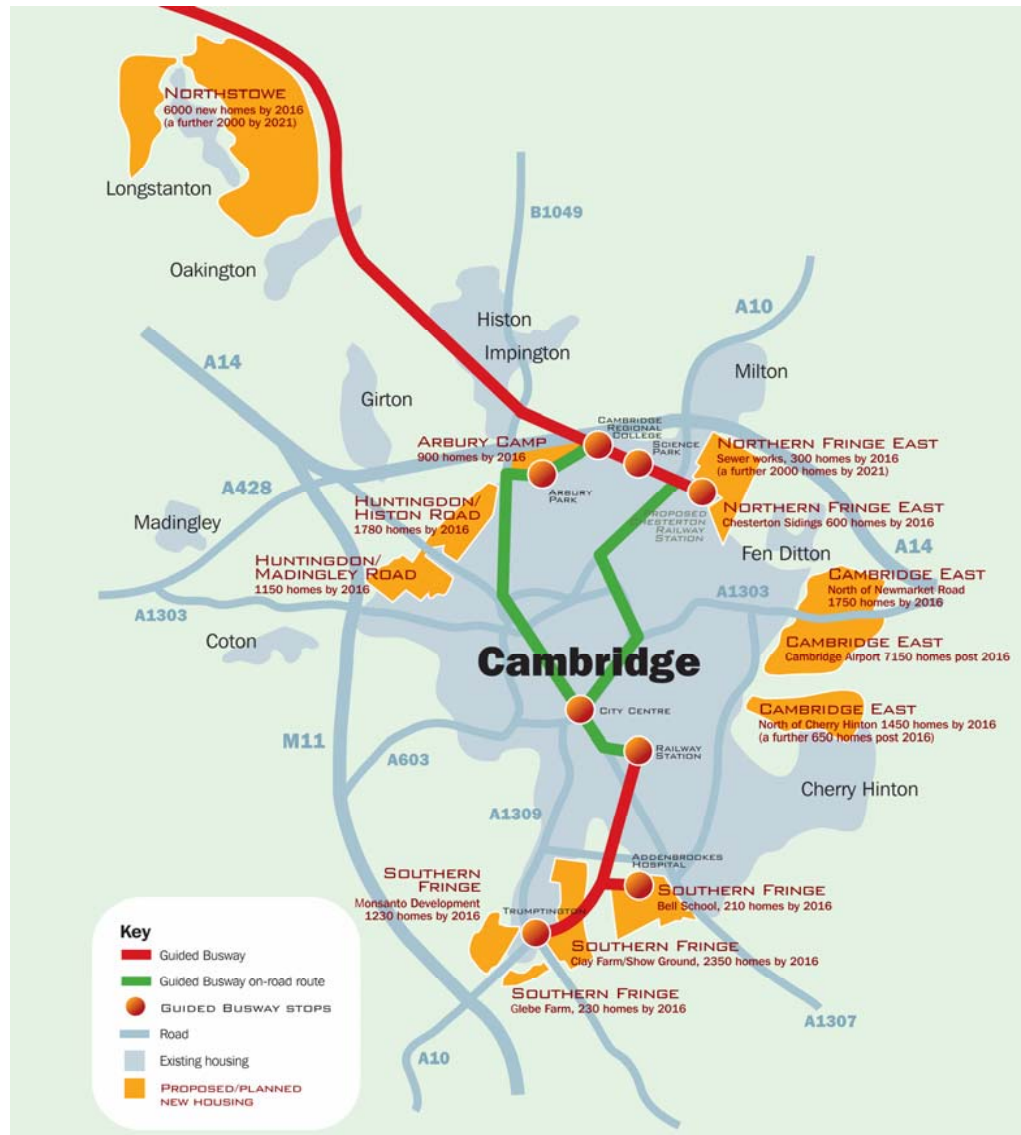


# Transport Innovation Fund Rules "Congestion TIF"

- ◆ £1.4bn available 2008-2014
- ◆ Local Authority Schemes must have:
  - ◆ Large scale Improvements to Public Transport, Highways, Walking and Cycling
  - ◆ Demand Management Measures, notably Road User Charging
- ◆ In future LTP Funding is likely to decline

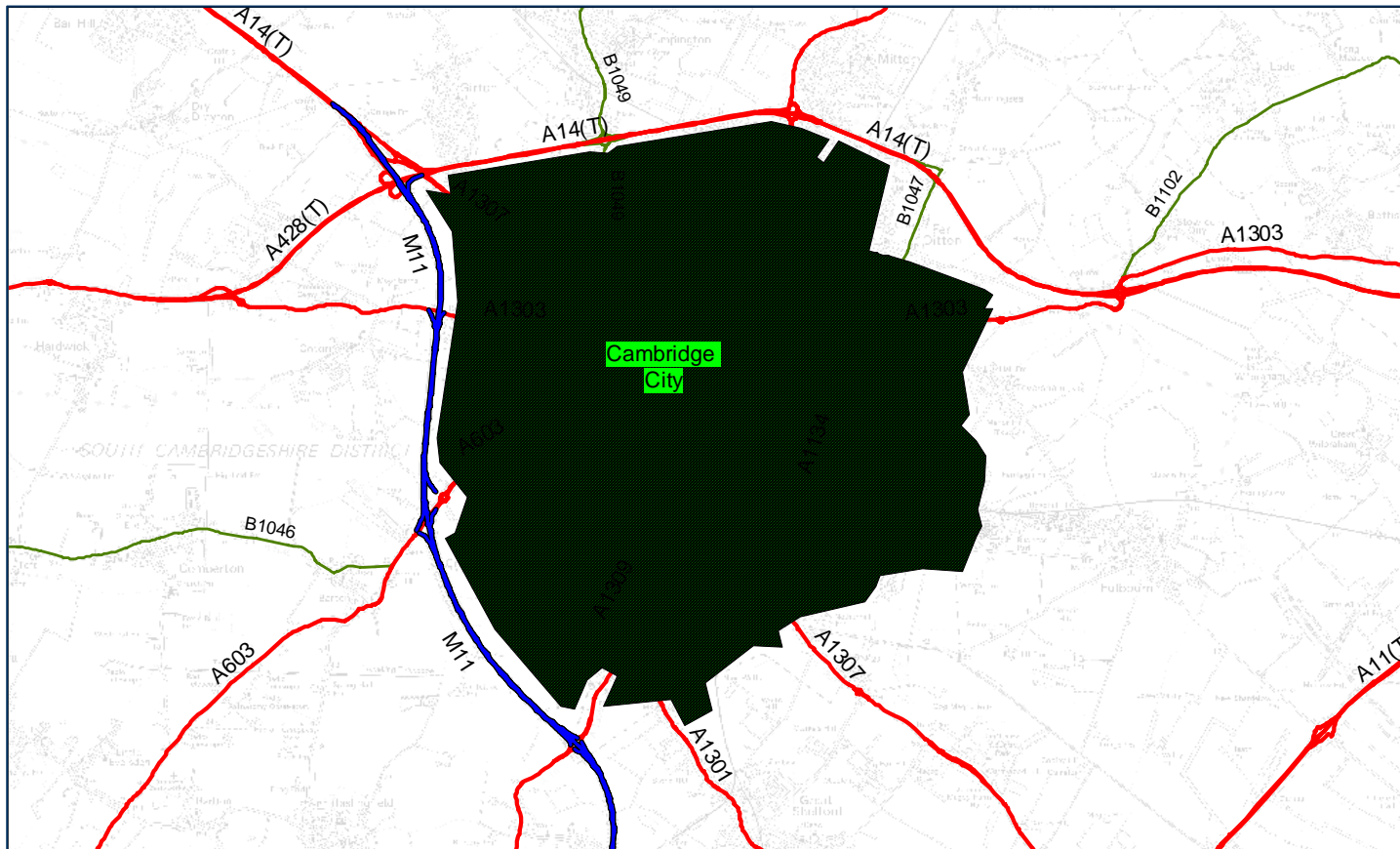
# Transport Innovation Fund Bid

- ◆ CCC have approved "Congestion TIF" bid for £517m
- ◆ To address Development Pressures to 2021 and beyond
- ◆ Transport Measures include:
  - ◆ Major Improvements to Public Transport, Walking and Cycling
  - ◆ Limited Road User Charging
- ◆ 3 months Public Engagement on bid
- ◆ Decision whether to proceed once Government response and Public Engagement complete



# Proposed Major Developments

# Proposed Area Road Charging Zone



# Transport Strategy Objectives

- ◆ Reduce Overall Traffic Levels by 10% compared to today's levels (as in school holidays)
- ◆ Provide high quality, safe & realistic Transport Choices
- ◆ Improve Accessibility to Services for all
- ◆ Be Fair & Equitable
- ◆ Reduce CO<sub>2</sub> & address specific Air Quality Issues
- ◆ Promote the Economy of Cambridgeshire

# TIF Potential Measures

- ◆ Extensive improvements to Public Transport
- ◆ Park and Ride
- ◆ Improved Information Systems
- ◆ Improvements to Cycling & Pedestrian Facilities
- ◆ Improvements to Road Network
- ◆ Physical Demand Management
- ◆ Congestion Charging (Area Licensing)

# Proposed Transport Improvements



# Managing the Network

- ◆ The Main Drivers
- ◆ Traffic Management Act
- ◆ Network Management Duty

## Present Position

- ◆ Managing the Network
- ◆ Stand-alone Systems

## Current Systems

- ◆ Urban Traffic Control
- ◆ SCOOT
- ◆ RMS
- ◆ Variable Message Signs
- ◆ Real Time Passenger Information

# Information In

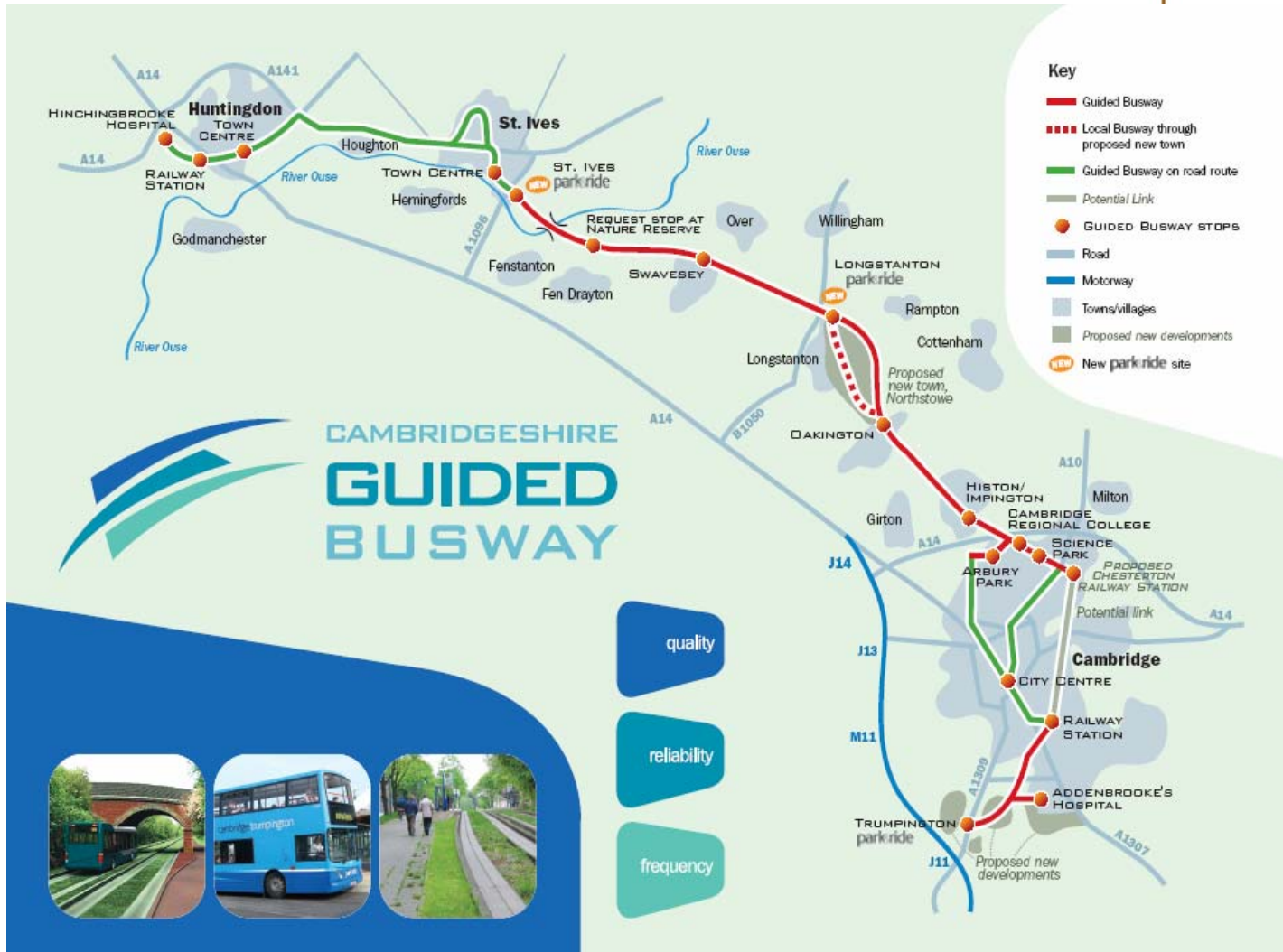
- ◆ UTC - Faults
- ◆ Traffic flow
- ◆ Bus travel data
- ◆ ATC

# Information Out

- ◆ Travel Information
- ◆ Driver Information
- ◆ ?

# Cambridgeshire Guided Busway

- ◆ Impact on the Network
- ◆ Managing the Network



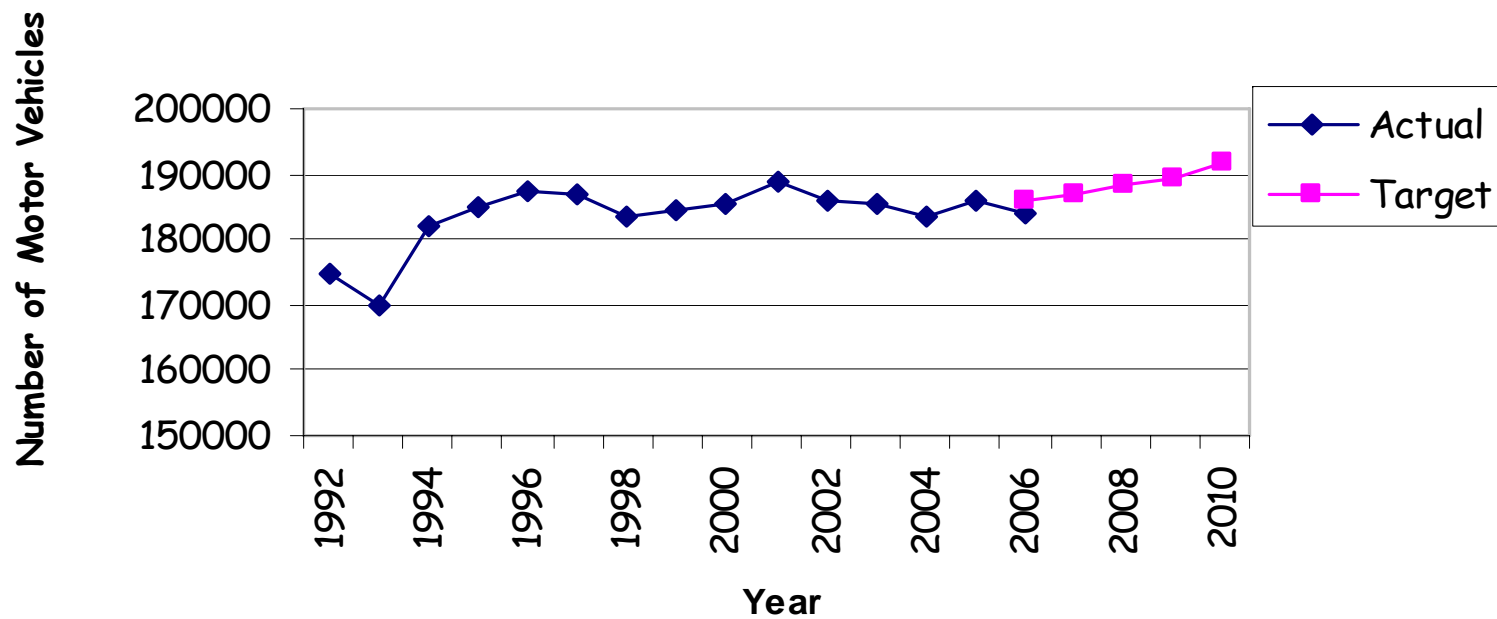
## TIF or no TIF?

- ◆ A radically changed Network
- ◆ More or less the same Network

## Issues around TIF

- ◆ Managing Traffic Growth
- ◆ Funding Issues
- ◆ Timing of Infrastructure Changes

## Motor Vehicles Entering and Leaving Cambridge



*Note: Figures prior to 2004 are based on the trend across the former radial cordon*

## Trip demand AM Peak 2021

Highway Trips	-27%
Park and Ride	+89%
Public Transport	+72%
Sustainable	-4%

## Post TIF

- ◆ Less All-user Road Space
- ◆ More Public Transport
- ◆ Modal Shift
- ◆ Information Infrastructure

# ITS Strategy

- ◆ Information Capture
- ◆ Information Processing
- ◆ Information Dissemination
- ◆ IHMC

# Information Capture

- ◆ As before but plus
- ◆ ANPR
- ◆ CCTV
- ◆ ?

# Information Processing

- ◆ UTMC
- ◆ Common database

# Information Dissemination

- ◆ Web
- ◆ Travel Line
- ◆ IBIS
- ◆ VMS
- ◆ On street kiosks

# Integrated Highway Management Centre

- ◆ Where? Castle Court
- ◆ When? Spring 2008
- ◆ Where? CGB - Northstowe
- ◆ When? Spring 2009

# The way it was (1993)

## "ADEPT" - "Congestion Metering"



# The way it will be

?